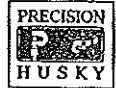


## Appendix A



# WTC-3086 SPECIFICATIONS

## General

Transport Length:	45' 3" [13.8 m]
Weight Total:	96,000 lbs [43,540 kg]
Weight Axles:	59,000 lbs [26,760 kg]
Transport Height:	13' 6" [4.11 m]
Width:	11' 6" [3.5 m]

## Infeed

Infeed Bed:	Sloped steel plate bed, provides guide and support for logs.
Bed Length:	15' [4.57 m] to lower infeed roll.
Infeed Roll Speed:	0 to 175 Feet [51.8 m] Per Minute. To match chipper feed.
Infeed Walls:	3/4" [19 mm] thick walls.
Lower Feed Chain:	30" [0.762 m] wide x 15' [4.57 m] long steel CAT style chain. With adjustable feed rate.
Feed Roll Drive:	The Upper Feed wheel is driven by dual hydraulic motors, the infeed chain is driven by a single hydraulic motor.

## Diesel Engine

2360Tm

Caterpillar 1050 hp C27 diesel engine. Engine is equipped with two dual stage dry type Donaldson air cleaner. Reversing radiator fan keeps debris out of the cooling system. Safety shutdown for water temperature and oil pressure.

Noise suppression:	Sound reduction is obtained by using an oversized fan and radiator. This allows engine to operate at 2050 rpm reducing total sound pressure energy.
Emer. shutdown:	Provided for low oil pressure and high engine temperature.

Note: All figures in [ ] are metric.

**Fuel Tanks**

Specifications: Single fuel tank with 400 gallon [1,762 L] capacity, with electric fuel gauge and locking fill cap for security.

---

**Hydraulic System**

System Pumps: Load Sense - Triple piston pumps  
Non-Load Sense - Two triple vane pumps

Hydraulic Oil Tank: 300 gallon [1,136 L] capacity with high capacity oil cooler. Mounted on vibration isolators, with sight gauge and locking fill cap for security.

Oil Cooler: Remote mounted oil cooler with reversing hydraulic fan motor(s).

---

**Control Panel**

Control Panel: Shock mounted with tach, hour meter, amp, oil pressure, fuel usage, percent of engine load, water temp, oil temp, throttle, key switch, and kill switch. Emergency shutdown switch for low oil pressure and high temperature. Hinged to swing out for serviceability.

Vandal Proofing: Padlocked instrument panel for security & maintenance lockout/tagout. Keyed locking fill caps for fuel and hydraulic tanks.

---

**Clutch**

Specifications: PT-Tech clutch package with 4 pump pad configurations. NY

---

**Chipper**

Chipper: 3086 chipper. 86" [2.184m] diameter disc 6" [155mm] thick. Available in 3 or 4 knife configurations. Capable of chipping 30" [0.762 m] diameter logs with variable chip length.

Spout Opening: 48"W x 30" H [1.22m x 0.762m].

Knives: 1/2" [12mm] x 5" [127mm] x 16" [406mm] half knives.

Hood: Two piece hinged hood with optional cylinder for opening.

Wear plates: 1/2" [12mm] thick weld-ox 100 wear plates.

Note: All figures in [ ] are metric.

---

**A. Specifications**

**WTC-3086**

Anvil: Standard removable vertical anvil, with optional horizontal anvil.  
Discharge Chute: 12" [305 mm] diameter side discharge spout with optional separator that hydraulically folds for transport. Several spout designs for various discharge configurations. Optional top discharge.

**Trailer**

Tongue weight: 37,000 lbs. [16.780 kg]  
Main Frame: W14 x 38 I-beam construction.  
Axle: Triple 22,500 lbs. [10,210 kg] with oil bath lubrication system.  
Brakes: 16-1/2" x 7" [419.1 mm x 117.8 mm] "S" cam-spring air brakes.  
Springs: 3" [76.2 mm] wide multiple leaf slipper springs to give stable load distribution.  
Tires: Dual 255/70 R22.5, Load rating H; 5,070lb@120psi at 75mph [2,300kg@830kpa at 120kph] **80%**  
Fifth Wheel: 2" [50.8 mm] SAE removable king pin with 1/2" [12.7mm] bolster plate.  
Lights: All clearance and directional lighting meets or exceeds I.C.C. and DOT regulations and inspection requirements.  
Jacks: Four (4) hydraulic jacks.

**Loader**

KBL: XL-245-27' [8.23 m] Loader without grapple.  
Lift Capacity: 27,900 Lbs. [12,660 kg.] @ 10 feet.  
18,800 Lbs. [8,528 kg.] @ 15 feet.  
14,100 Lbs. [6,396 kg.] @ 20 feet.  
10,800 Lbs. [4,900 kg.] @ 25 feet  
Weights are at 10' [3m] above ground, less grapple weight-1,200 Lbs.[544 kg.]

**Clutch**

Specifications: PT-Tech clutch package with 4 pump pad configurations. **NY**

Note: All figures in [ ] are metric.

**Operator's Cab**

- Cab: 44" x 44" [1.1 m x 1.1 m], tinted windshield made of 1/2" [12.7 mm] impact resistant Lexan, wiper, washer, defroster, dome light, fan, horn, insulation, heater and air conditioner. Cab tilts hydraulically for transportation and operation. The cab has a state-of-the-art comfort control seat with joystick controls.
- ~~Control Valves: Electric over hydraulic with fully adjustable joystick controls. Optional CAN valve and joystick package available.~~
- Cab Control Panel: The cab controls include oil pressure gauge, tachometer, engine temperature gauge, toggle switch control for engine fast/slow, engine engage, clutch engage/ disengage, spout fold/unfold, feed wheel control, chute extend/retract, chute rotate, and hydraulic jack raise/lower. Other controls include wiper/washer for the windshield, emergency stop button, and horn button. Pivots on 42" turn table bearing.
- ~~Grapple: 1/3 cord (11 1/2 cu. ft) [33 cu. m] bypass, continuous rotation.~~

Parker-ican controls  
Motor vermare  
indexator (rotator)

Note: All figures in [ ] are metric.



F 111 FT 100

21.055.1 1/2

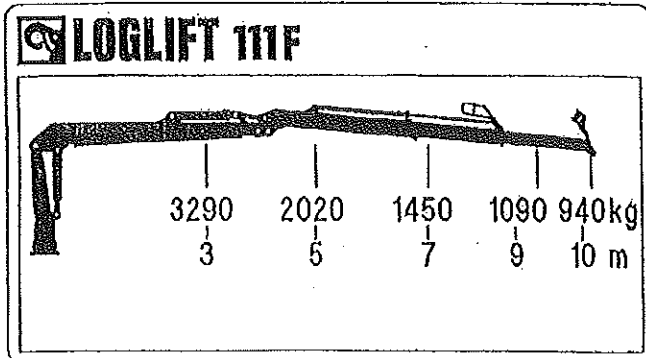
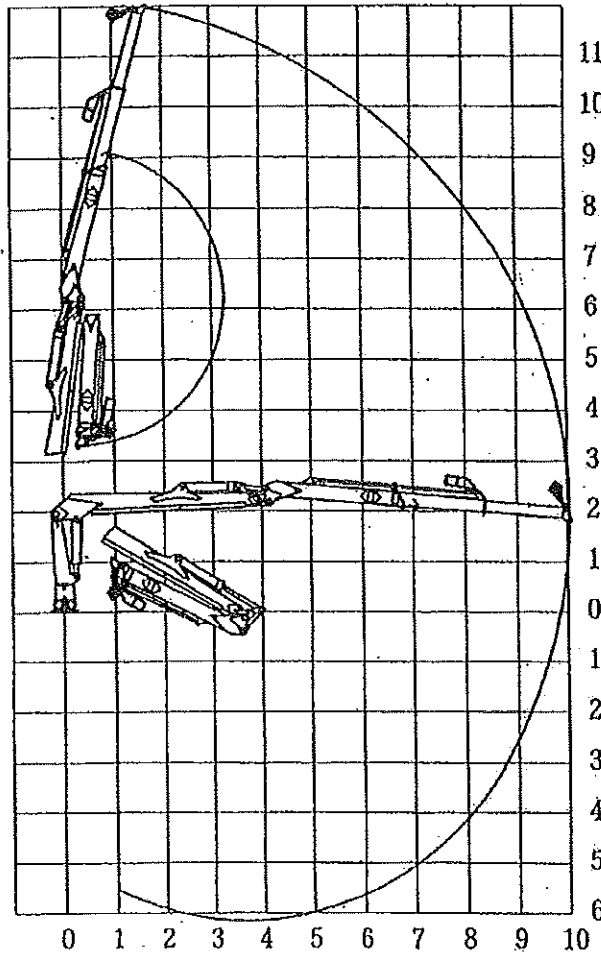
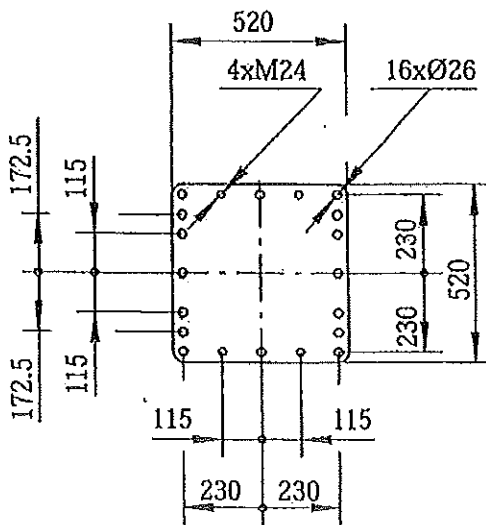
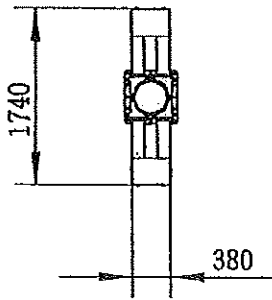
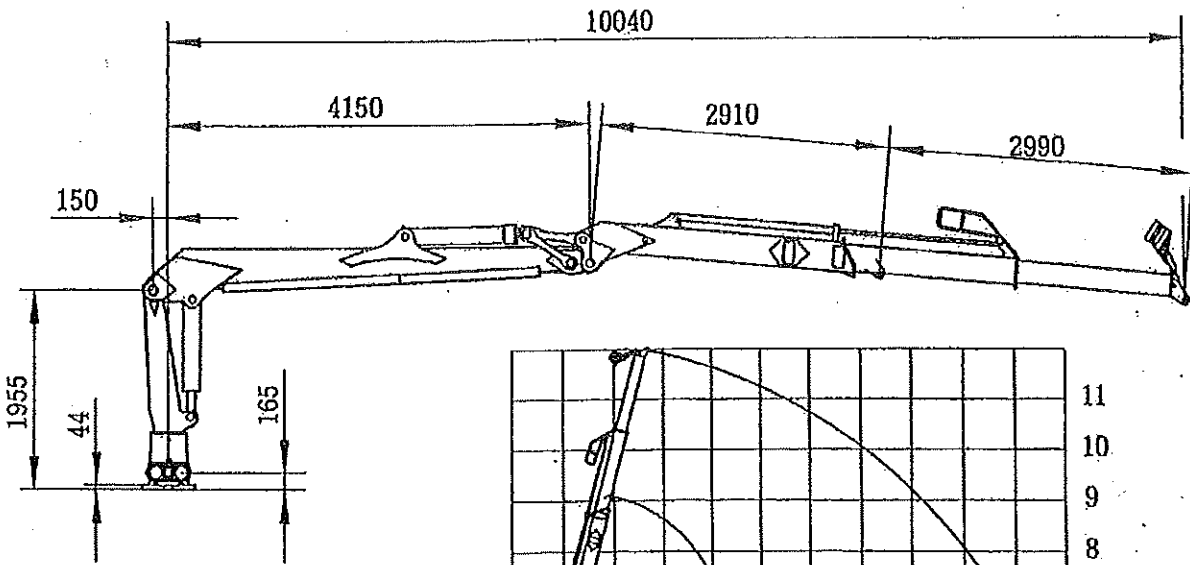
Tekniset tiedot  
Tekniska data

Specification  
Technische Daten

Specification

5  
11101-

07.11.2008



103822A - Grapple

